

U.S. Coast Guard Auxiliary District 7



Navigation Center

United States Coast Guard
U.S. Department of Homeland Security



Maritime Security Levels (MARSEC) >

Port Status and USCG Port Contacts >

Route Planning / Maritime Safety Information (MSI)

Coast Guard / NAVCEN Services

→ MSI App (Build Custom LNM and Light Lists)

→ Contact Us

Maritime Safety Information

→ Local Notices to Mariners Weekly (LNM - PDF only)

→ Light Lists Weekly (LL - PDF only)

→ Search and Rescue Satellite (SARSAT)

→ Marine Safety Information Bulletins (MSIBs)

D7NS 30004.4

more >

→ Report an LRIT Issue

→ Report an AIS Problem

→ Report an Iceberg

→ Request a Marine Event Permit (Coming Soon!)

→ Sign Up For Email Notifications

more >

FEBRUARY 2026

U.S. Coast Guard Auxiliary District 7



Navigation Center

United States Coast Guard
U.S. Department of Homeland Security



1. Light Lists

- Annual
- Weekly

2. Local Notice to Mariners (LNM)

- LNMs by CG District
- Daily LNM Discrepancies

3. Broadcast Notice to Mariners (BNM)

4. Maritime Safety Information (MSI) Products App

5. Coast Pilot



Office of
Coast
Survey

USCG Navigation Center



Navigation Center

United States Coast Guard
U.S. Department of Homeland Security



navcen.uscg.gov

[Maritime Security Levels \(MARSEC\)](#) >

[Port Status and USCG Port Contacts](#) >

Route Planning / Maritime Safety Information (MSI)

- [MSI App \(Build Custom LNMs and Light Lists\)](#)
- [Broadcast Notices to Mariners \(BNMs\)](#)
- [Space Operations Launch and Recovery \(SOLAR\)](#)
- [Local Notices to Mariners Weekly \(LNM - PDF only\)](#)
- [Light Lists Weekly \(LL - PDF only\)](#)
- [Search and Rescue Satellite \(SARSAT\)](#)
- [Marine Safety Information Bulletins \(MSIBs\)](#)
- [International Ice Patrol](#)

[more](#) >

Coast Guard / NAVCEN Services

- [Contact Us](#)
- [AIS Historical Data Requests](#)
- [Report an ATON Discrepancy](#)
- [Report an LRIT Issue](#)
- [Report an AIS Problem](#)
- [Report an Iceberg](#)
- [Request a Marine Event Permit \(Coming Soon!\)](#)
- [Sign Up For Email Notifications](#)

[more](#) >

LIGHT LIST - Annual

U.S. Department of
Homeland Security

United States
Coast Guard



**Light List is
published by
Coast Guard
District**

LIGHT LIST

Volume III

ATLANTIC and GULF COASTS

Little River, South Carolina to Econfinia River, Florida
(Includes Puerto Rico and the U.S. Virgin Islands)

This Light List contains a list of lights, sound
signals, buoys, daybeacons, and other aids to navigation.

2025

COMDTPUB P16502.1

LIGHT LIST - Annual

1/2/25, 6:38 AM

Maritime Safety Information Products | Navigation Center

Light List for Volume 3 (District 7)

01/02/2025

LLNR	Name	Position	Characteristic	Height	Range	Structure	Remarks
5	Long Bay Fish Haven Buoy B	33-41-36.626N 078-26-47.022W				Yellow nun.	
10	Little River Fish Haven Buoy A	33-48-55.000N 078-30-30.000W				Yellow nun.	
15	Little River Inlet Lighted Buoy LR	33-49-49.513N 078-32-27.325W	Mo (A) W		5	Red and white stripes with red spherical topmark.	AIS: MMSI 993672126
20	General Sherman Wreck Buoy	33-43-49.823N 078-32-49.036W				Yellow nun.	
25	Little River Inlet North Jetty Light 2	33-50-31.490N 078-32-39.490W	Fl R 4s	0	5	TR on dolphin.	

The annual Light List is in numeric order by Light List Number (LLNR)

LIGHT LIST - Annual

1/2/25, 6:38 AM

Maritime Safety Information Products | Navigation Center

Light List for Volume 3 (District 7)

01/02/2025

LLNR	Name	Position	Characteristic	Height	Range	Structure	Remarks
5	Long Bay Fish Haven Buoy B	33-41-36.626N 78-26-47.022W				Yellow nun.	
10	Little River Fish Haven Buoy A	33-48-55.000N 78-30-30.000W				Yellow nun.	
15	Little River Inlet Lighted Buoy LR	33-49-49.513N 78-32-27.325W	Mo (A) W		5	Red and white stripes with red spherical topmark.	AIS: MMSI 993672126
20	General Sherman Wreck Buoy	33-43-49.823N 78-32-49.036W				Yellow nun.	
25	Little River Inlet North Jetty Light 2	33-50-31.490N 78-32-39.490W	Fl R 4s	0	5	TR on dolphin.	

The full name of the aid

LIGHT LIST - Annual

1/2/25, 6:38 AM

Maritime Safety Information Products | Navigation Center

Light List for Volume 3 (District 7)

01/02/2025

LLNR	Name	Position	Characteristic	Height	Range	Structure	Remarks
5	Long Bay Fish Haven Buoy B	33-41-36.626N 078-26-47.022W				Yellow nun.	
10	Little River Fish Haven Buoy A	33-48-55.000N 078-30-30.000W				Yellow nun.	
15	Little River Inlet Lighted Buoy LR	33-49-49.513N 078-32-27.325W	Mo (A) W	5		Red and white stripes with red spherical topmark.	AIS: MMSI 993672126
20	General Sherman Wreck Buoy	33-43-49.823N 078-32-49.036W				Yellow nun.	
25	Little River Inlet North Jetty Light 2	33-50-31.490N 078-32-39.490W	Fl R 4s	0	5	TR on dolphin.	

The Assigned Position (AP) in DD-MM-SS.SSS

LIGHT LIST - Annual

1/2/25, 6:38 AM

Maritime Safety Information Products | Navigation Center

Light List for Volume 3 (District 7)

01/02/2025

LLNR	Name	Position	Characteristic	Height	Range	Structure	Remarks
5	Long Bay Fish Haven Buoy B	33-41-36.626N 078-26-47.022W				Yellow nun.	
10	Little River Fish Haven Buoy A	33-48-55.000N 078-30-30.000W				Yellow nun.	
15	Little River Inlet Lighted Buoy LR	33-49-49.513N 078-32-27.325W	Mo (A) W		5	Red and white stripes with red spherical topmark.	AIS: MMSI 993672126
20	General Sherman Wreck Buoy	33-43-49.823N 078-32-49.036W				Yellow nun.	
25	Little River Inlet North Jetty Light 2	33-50-31.490N 078-32-39.490W	Fl R 4s	0	5	TR on dolphin.	

The Characteristic is the color and pattern of the light (if lighted)

LIGHT LIST - Annual

1/2/25, 6:38 AM

Maritime Safety Information Products | Navigation Center

Light List for Volume 3 (District 7)

01/02/2025

LLNR	Name	Position	Characteristic	Height	Range	Structure	Remarks
5	Long Bay Fish Haven Buoy B	33-41-36.626N 078-26-47.022W				Yellow nun.	
10	Little River Fish Haven Buoy A	33-48-55.000N 078-30-30.000W				Yellow nun.	
15	Little River Inlet Lighted Buoy LR	33-49-49.513N 078-32-27.325W	Mo (A) W			Red and white stripes with red spherical topmark.	AIS: MMSI 993672126
20	General Sherman Wreck Buoy	33-43-49.823N 078-32-49.036W				Yellow nun.	
25	Little River Inlet North Jetty Light 2	33-50-31.490N 078-32-39.490W	Fl R 4s	0		TR on dolphin.	

Where given, Height is the level of the light above Mean Sea Level (MSL)

LIGHT LIST - Annual

1/2/25, 6:38 AM

Maritime Safety Information Products | Navigation Center

Light List for Volume 3 (District 7)

01/02/2025

LLNR	Name	Position	Characteristic	Height	Range	Structure	Remarks
5	Long Bay Fish Haven Buoy B	33-41-36.626N 078-26-47.022W				Yellow nun.	
10	Little River Fish Haven Buoy A	33-48-55.000N 078-30-30.000W				Yellow nun.	
15	Little River Inlet Lighted Buoy LR	33-49-49.513N 078-32-27.325W	Mo (A) W		5	Red and white stripes with red spherical topmark.	AIS: MMSI 993672126
20	General Sherman Wreck Buoy	33-43-49.823N 078-32-49.036W				Yellow nun.	
25	Little River Inlet North Jetty Light 2	33-50-31.490N 078-32-39.490W	Fl R 4s	0	5	TR on dolphin.	

Range is the luminous range – the distance from which the light is visible in normal atmospheric conditions.

LIGHT LIST - Annual

1/2/25, 6:38 AM

Maritime Safety Information Products | Navigation Center

Light List for Volume 3 (District 7)

01/02/2025

LLNR	Name	Position	Characteristic	Height	Range	Structure	Remarks
5	Long Bay Fish Haven Buoy B	33-41-36.626N 078-26-47.022W				Yellow nun.	
10	Little River Fish Haven Buoy A	33-48-55.000N 078-30-30.000W				Yellow nun.	
15	Little River Inlet Lighted Buoy LR	33-49-49.513N 078-32-27.325W	Mo (A) W		5	Red and white stripes with red spherical topmark.	AIS: MMSI 993672126
20	General Sherman Wreck Buoy	33-43-49.823N 078-32-49.036W				Yellow nun.	
25	Little River Inlet North Jetty Light 2	33-50-31.490N 078-32-39.490W	Fl R 4s	0	5	TR on dolphin.	

Structure lists the physical characteristics of the aid.

LIGHT LIST - Annual

1/2/25, 6:38 AM

Maritime Safety Information Products | Navigation Center

Light List for Volume 3 (District 7)

01/02/2025

LLNR	Name	Position	Characteristic	Height	Range	Structure	Remarks
5	Long Bay Fish Haven Buoy B	33-41-36.626N 078-26-47.022W				Yellow nun.	
10	Little River Fish Haven Buoy A	33-48-55.000N 078-30-30.000W				Yellow nun.	
15	Little River Inlet Lighted Buoy LR	33-49-49.513N 078-32-27.325W	Mo (A) W	5		Red and white stripes with red spherical topmark.	AIS: MMSI 993672126
20	General Sherman Wreck Buoy	33-43-49.823N 078-32-49.036W				Yellow nun.	
25	Little River Inlet North Jetty Light 2	33-50-31.490N 078-32-39.490W	Fl R 4s	0	5	TR on dolphin.	

Remarks include other info such as AIS, range light visibility angles, notes on ownership. IT DOES NOT STATE IF AID IS PRIVATE

LIGHT LIST - Preface

Home / Maritime Safety Information / MSI Products App

MSI Products APP

Print

Maritime Safety Information Products

To start: on the Chart, mouse over the pancake menu (☰) and select the layers you wish to view. Click here for the [User Guide](#). Click here for the [Weekly LNM Snapshots](#).

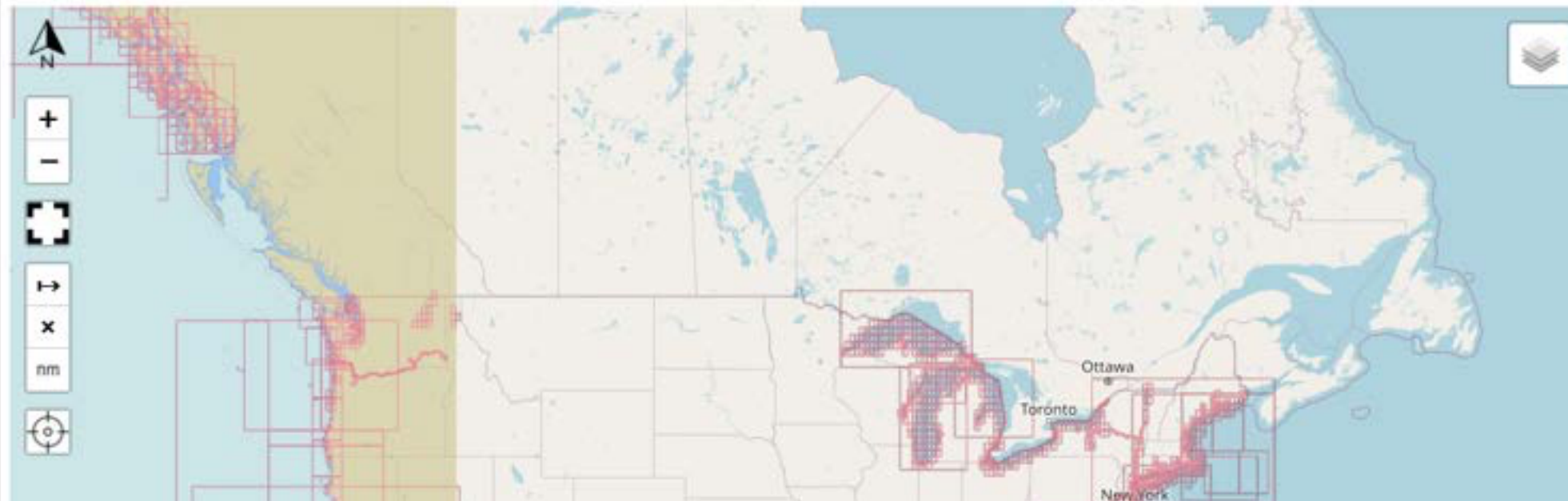
Local Notice to Mariners (LNM) & Light List (L/L) Map Viewer

Print LNM & L/L

LNM & L/L Prefaces

Download MSI Files

Special Notices



LIGHT LIST - Preface

[Local Notice to Mariners \(LNM\) & Light List \(L/L\) Map Viewer](#)

[Print LNM & L/L](#)

[LNM & L/L Prefaces](#)

[Download MSI Files](#)

[Special Notices](#)

Official Disclaimer

The introductory sections of these documents, including the preface, table of contents, and introduction, are presently being revised to conform to the updated format. These materials will be finalized and published in a subsequent release. We appreciate your patience and understanding during this process.

Local Notice to Mariners Prefaces

- [Northeast District \(1\)](#)
- [East District \(5\)](#)
- [Southeast District \(7\)](#)
- [Heartland District \(8\) - Gulf](#)
- [Heartland District \(8\) - MRS](#)
- [Great Lakes District \(9\)](#)
- [Southwest District \(11\)](#)
- [Northwest District \(13\)](#)
- [Oceania District \(14\)](#)
- [Arctic District \(17\)](#)

Light List Preface

[Light List Preface](#)

LIGHT LIST - Preface

TABLE OF CONTENTS

CHAPTER 1. GENERAL INFORMATION

- A. Light List Volumes and Geographic Description
- B. Light List Coast Guard District Information
- C. Aids to Navigation Arrangement

CHAPTER 2. LIGHT LIST FORMAT AND DESCRIPTORS

- A. Light List Format
- B. Remarks for Ranges
- C. Abbreviations
- D. Luminous and Geographic Range
- E. Dayboard Designations and Descriptions

APPENDIX A

APPENDIX B

- A. Abbreviations
- B. Regulatory Directory for Federal Aids in the United States Aids to Navigation System
- C. Regulatory Directory for Private Aids to Navigation
- D. International Organization for Marine Aids to Navigation (IALA) Buoyage System

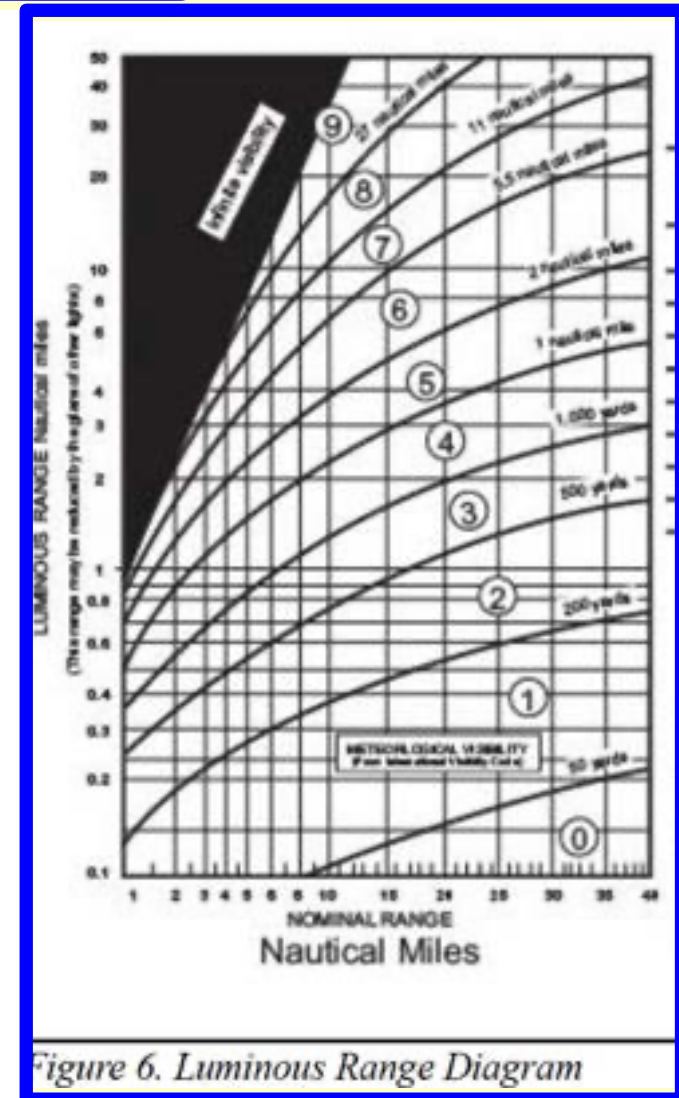


Figure 6. Luminous Range Diagram

LIGHT LIST - Weekly

Light List for Volume 3 (Southeast District) - 01/28/2026

LLNR	Name	Position	Characteristic	Height	Range	Structure	Remarks
5	Long Bay Fish Haven Buoy B	33-41-36.626N 078-26-47.022W				Yellow nun.	
10	Little River Fish Haven Buoy A	33-48-55.000N 078-30-30.000W				Yellow nun.	
15	Little River Inlet Lighted Buoy LR	33-49-49.513N 078-32-27.325W	Mo (A) W		5	Red and white stripes with red spherical topmark.	AIS: MMSI 993672126
20	General Sherman Wreck Buoy	33-43-49.823N 078-32-49.036W				Yellow nun.	
25	Little River Inlet North Jetty Light 2	33-50-31.490N 078-32-39.490W	FI R 4s	24	5	TR on dolphin.	

The weekly Light List has the same format as the annual.

LNM - pdf

1/28/26, 2:43 PM

Maritime Safety Information Products | Navigation Center

Local Notice to Mariners for Southeast District 01/28/2026

Alafia River

Federal Discrepancies

NAME	LLNR	STATUS	AID TYPE
Alafia River Light 12	23300	LT EXT	FD

Federal Discrepancies Corrected

NAME	LLNR	STATUS	AID TYPE	CORRECTION DATE
Alafia River Light 6	23270	WATCHING PROPERLY	FD	2026-01-22
Alafia River Light 7	23275	REBUILT/RECOVERED	FD	2026-01-22
Alafia River Light 7	23275	WATCHING PROPERLY	FD	2026-01-22
Alafia River Light 15	23315	REBUILT/REMAINS	FD	2026-01-22

Private Discrepancies

NAME	LLNR	STATUS	AID TYPE
Williams Park Daybeacon 6	23329.5	DAYMK IMCH	PA

The pdf Local Notice to Mariners is by CG District and updated weekly.

LNM - pdf

1/28/26, 2:43 PM

Maritime Safety Information Products | Navigation Center

Local Notice to Mariners for Southeast District 01/28/2026

Alafia River

Federal Discrepancies

NAME	LLNR	STATUS	AID TYPE
Alafia River Light 12	23300	LT EXT	FD

Federal Discrepancies Corrected

NAME	LLNR	STATUS	AID TYPE	CORRECTION DATE
Alafia River Light 6	23270	WATCHING PROPERLY	FD	2026-01-22
Alafia River Light 7	23275	REBUILT/RECOVERED	FD	2026-01-22
Alafia River Light 7	23275	WATCHING PROPERLY	FD	2026-01-22
Alafia River Light 15	23315	REBUILT/REMAINS	FD	2026-01-22

Private Discrepancies

NAME	LLNR	STATUS	AID TYPE
Williams Park Daybeacon 6	23329.5	DAYMK IMCH	PA

It is grouped by Waterway

LNM - pdf

1/28/26, 2:43 PM

Maritime Safety Information Products | Navigation Center

Local Notice to Mariners for Southeast District 01/28/2026

Alafia River

Federal Discrepancies

NAME	LLNR	STATUS	AID TYPE
Alafia River Light 12	23300	LT EXT	FD

Federal Discrepancies Corrected

NAME	LLNR	STATUS	AID TYPE	CORRECTION DATE
Alafia River Light 6	23270	WATCHING PROPERLY	FD	2026-01-22
Alafia River Light 7	23275	REBUILT/RECOVERED	FD	2026-01-22
Alafia River Light 7	23275	WATCHING PROPERLY	FD	2026-01-22
Alafia River Light 15	23315	REBUILT/REMAINS	FD	2026-01-22

Private Discrepancies

NAME	LLNR	STATUS	AID TYPE
Williams Park Daybeacon 6	23329.5	DAYMK IMCH	PA

It is grouped by Waterway – then sorted by status

LNM - pdf

1/28/26, 2:43 PM

Maritime Safety Information Products | Navigation Center

Local Notice to Mariners for Southeast District 01/28/2026

Alafia River

Federal Discrepancies

NAME	LLNR	STATUS	AID TYPE
Alafia River Light 12	23300	LT EXT	FD

Federal Discrepancies Corrected

NAME	LLNR	STATUS	AID TYPE	CORRECTION DATE
Alafia River Light 6	23270	WATCHING PROPERLY	FD	2026-01-22
Alafia River Light 7	23275	REBUILT/RECOVERED	FD	2026-01-22
Alafia River Light 7	23275	WATCHING PROPERLY	FD	2026-01-22
Alafia River Light 15	23315	REBUILT/REMAINS	FD	2026-01-22

Private Discrepancies

NAME	LLNR	STATUS	AID TYPE
Williams Park Daybeacon 6	23329.5	DAYMK IMCH	PA

Within each status group, the list is in order of LLNR, with the name first

LNM - pdf

1/28/26, 2:43 PM

Maritime Safety Information Products | Navigation Center

Local Notice to Mariners for Southeast District 01/28/2026

Alafia River

Federal Discrepancies

NAME	LLNR	STATUS	AID TYPE
Alafia River Light 12	23300	LT EXT	FD

Federal Discrepancies Corrected

NAME	LLNR	STATUS	AID TYPE	CORRECTION DATE
Alafia River Light 6	23270	WATCHING PROPERLY	FD	2026-01-22
Alafia River Light 7	23275	REBUILT/RECOVERED	FD	2026-01-22
Alafia River Light 7	23275	WATCHING PROPERLY	FD	2026-01-22
Alafia River Light 15	23315	REBUILT/REMAINS	FD	2026-01-22

Private Discrepancies

NAME	LLNR	STATUS	AID TYPE
Williams Park Daybeacon 6	23329.5	DAYMK IMCH	PA

The status of the aid is given, with specifics of discrepancies.

LNM - pdf

1/28/26, 2:43 PM

Maritime Safety Information Products | Navigation Center

Local Notice to Mariners for Southeast District 01/28/2026

Alafia River

Federal Discrepancies

NAME	LLNR	STATUS	AID TYPE
Alafia River Light 12	23300	LT EXT	FD

Federal Discrepancies Corrected

NAME	LLNR	STATUS	AID TYPE	CORRECTION DATE
Alafia River Light 6	23270	WATCHING PROPERLY	FD	2026-01-22
Alafia River Light 7	23275	REBUILT/RECOVERED	FD	2026-01-22
Alafia River Light 7	23275	WATCHING PROPERLY	FD	2026-01-22
Alafia River Light 15	23315	REBUILT/REMAINS	FD	2026-01-22

Private Discrepancies

NAME	LLNR	STATUS	AID TYPE
Williams Park Daybeacon 6	23329.5	DAYMK IMCH	PA

And even though it is redundant, it states if the aid is Federal or Private.

LNM - pdf

1/28/26, 2:43 PM

Maritime Safety Information Products | Navigation Center

Local Notice to Mariners for Southeast District 01/28/2026

Alafia River

Federal Discrepancies

NAME	LLNR	STATUS	AID TYPE
Alafia River Light 12	23300	LT EXT	FD

Federal Discrepancies Corrected

NAME	LLNR	STATUS	AID TYPE	CORRECTION DATE
Alafia River Light 6	23270	WATCHING PROPERLY	FD	2026-01-22
Alafia River Light 7	23275	REBUILT/RECOVERED	FD	2026-01-22
Alafia River Light 7	23275	WATCHING PROPERLY	FD	2026-01-22
Alafia River Light 15	23315	REBUILT/REMAINS	FD	2026-01-22

Private Discrepancies

NAME	LLNR	STATUS	AID TYPE
Williams Park Daybeacon 6	23329.5	DAYMK IMCH	PA

The date an aid was corrected is given, but not the original LNM date.

LNМ- Preface

[Local Notice to Mariners \(LNM\) & Light List \(L/L\) Map Viewer](#)

[Print LNM & L/L](#)

[LNМ & L/L Prefaces](#)

[Download MSI Files](#)

[Special Notices](#)

Official Disclaimer

The introductory sections of these documents, including the preface, table of contents, and introduction, are presently being revised to conform to the updated format. These materials will be finalized and published in a subsequent release. We appreciate your patience and understanding during this process.

Local Notice to Mariners Prefaces

- [Northeast District \(1\)](#)
- [East District \(5\)](#)
- [Southeast District \(7\)](#)
- [Heartland District \(8\) - Gulf](#)
- [Heartland District \(8\) - MRS](#)
- [Great Lakes District \(9\)](#)
- [Southwest District \(11\)](#)
- [Northwest District \(13\)](#)
- [Oceania District \(14\)](#)
- [Arctic District \(17\)](#)

Light List Preface

[Light List Preface](#)

LNM- Preface



U.S. Department of Homeland Security

United States Coast Guard

District contact information

LOCAL NOTICE TO MARINERS

District: 7

Week: 49/24

LITTLE RIVER, SOUTH CAROLINA TO ECONFINA RIVER, FLORIDA (INCLUDES PUERTO RICO AND THE U.S. VIRGIN ISLANDS)

Questions or inquiries concerning the Seventh Coast Guard District Local Notice to Mariners should be directed to:
Commander, Seventh Coast Guard District (dpw)

Abbreviations

List of Abbreviations

ADRIFT - Buoy Adrift

ICW - Intracoastal Waterway

R - Red

AICW - Atlantic Intracoastal Waterway

IMCH - Improper Characteristic

RACON - Radar Transponder Beacon

AI - Alternating

INL - Inlet

Ra ref - Radar reflector

B - Buoy

INOP - Not Operating

RBN - Radio Beacon

BKW - Breakwater

INT - Intensity

REBUILT - Aid Rebuilt

bl - Blast

ISL - Islet

RECOVERED - Aid Recovered

Iso - Isophase

Daily LNM Discrep

Home / Maritime Safety Information / MSI Products App

MSI Products APP

Maritime Safety Information Products

To start: on the Chart, mouse over the pancake menu (☰) and select the layers you wish to view. Click here for the [User Guide](#). Click here for the [Weekly LNM Snapshots](#).

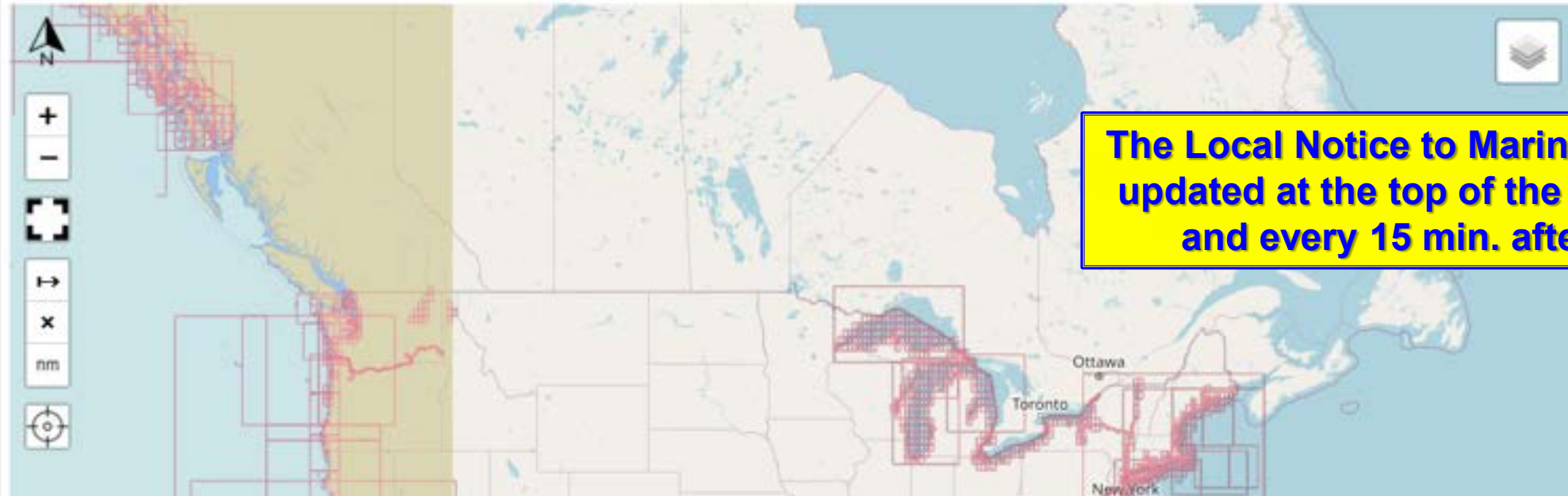
Local Notice to Mariners (LNM) & Light List (L/L) Map Viewer

Print LNM & L/L

LNM & L/L Prefaces

Download MSI Files

Special Notices



The Local Notice to Mariners is updated at the top of the hour and every 15 min. after

Daily LNM Discrep

[Home](#) / [Maritime Safety Information](#) / [MSI Products App](#)

Maritime Safety Information Products

To start: on the Chart, mouse over the pancake menu (☰) and select the layers you wish to view. [Click here for the User Guide](#)
[Snapshots](#).

[Local Notice to Mariners \(LNM\) & Light List \(L/L\) Map Viewer](#)

[Print LNM & L/L](#)

[LNM & L/L Prefaces](#)

[Down](#)

Select a Product



Select a District



Enter Waterway (full or partial)

Submit

Daily LNM Discrep

[Home](#) / [Maritime Safety Information](#) / [MSI Products App](#)

Maritime Safety Information Products

To start: on the Chart, mouse over the pancake menu (☰) and select the layers you wish to view. [Click here for the User Guide](#) [Snapshots](#).

Local Notice to Mariners (LNM) & Light List (L/L) Map Viewer

Print LNM & L/L

LNM & L/L Prefaces

Down

LNM



Southeast (7)



Print by Category



Enter Waterway (full or partial)

Submit

Daily LNM Discrep

Note: Only waterways with data are displayed.

Local Notice to Mariners for Southeast District	
Waterway	Report Data
Alafia River	View Data
Altamaha Sound	View Data
Amelia River	View Data
Anclote Anchorage North Entrance	View Data
Anclote River	View Data

Print

Daily LNM Discrep

Close

Southeast District 02/03/2026

Anclote River

Federal Discrepancies

NAME	LLNR	STATUS	AID TYPE
Anclote River Light 9	26180	STRUCT DEST/TRLB/SINKING	FD
Anclote River Daybeacon 11	26190	STRUCT DEST/TRLB/HAZ NAV	FD
Anclote River Daybeacon 12	26190.5	HAZ NAV/STRUCT DEST/TRLB	FD
Anclote River Daybeacon 38	26305	STRUCT DEST/TRUB	FD
Anclote River Turning Basin Shoal Daybeacon A	26360	STRUCT MISSING/TRUB	FD
Anclote River Turning Basin Shoal Daybeacon B	26365	STRUCT MISSING/TRUB	FD

Private Discrepancies

NAME	LLNR	STATUS	AID TYPE
Anclote Village Marina Daybeacon 7	26233.7	DAYMK MISSING	PA

Light List from MSI

Local Notice to Mariners (LNM) & Light List (L/L) Map Viewer

Print LNM & L/L

LNM & L/L Prefaces

Download MSI Files

Special No

Light List

Southeast (7)

-- OR --

Select a Volume

Enter Waterway (full or partial)

Submit

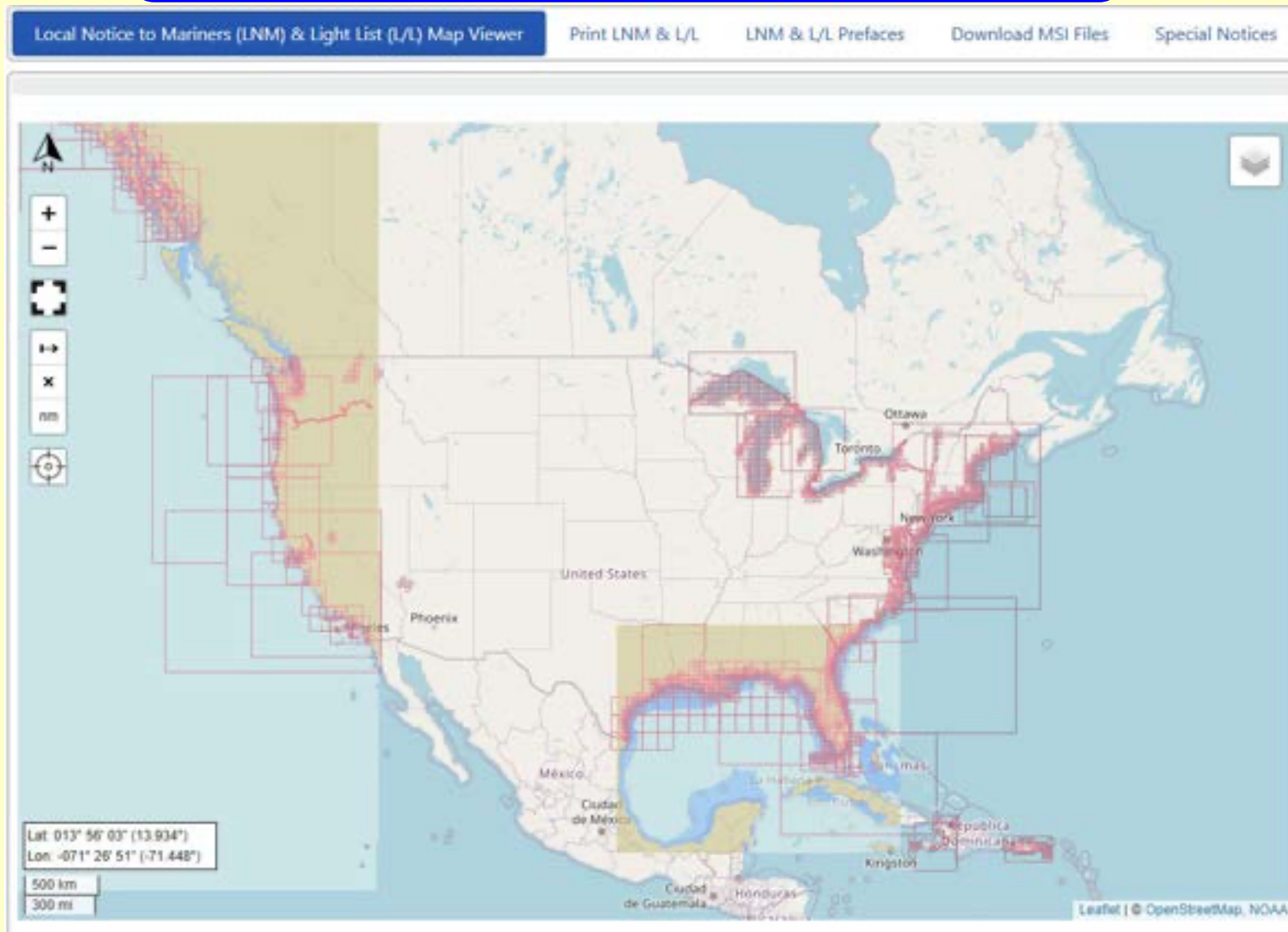
Print LL/LNM

The Light List is updated every day at 0520 Eastern

Light List for Southeast District

LLNR	Name	Position	Characteristic	Height	Range	Structure	Remarks
5	Long Bay Fish Haven Buoy B	33-41-36.626N 078-26-47.022W				Yellow nun.	
10	Little River Fish Haven Buoy A	33-48-55.000N 078-30-30.000W				Yellow nun.	
15	Little River Inlet Lighted Buoy LR	33-49-49.513N 078-32-27.325W	Mo (A) W		5	Red and white stripes with red spherical topmark.	AIS: MMSI 993672126

MSI Display



LIGHT LIST – Display

Zoom: 12

Wynwood

Miami Beach

Miami

Crandon Park

Key Biscayne

FL 907

nm

Data to Table

- Zoom in to desired area
- Select layers to display

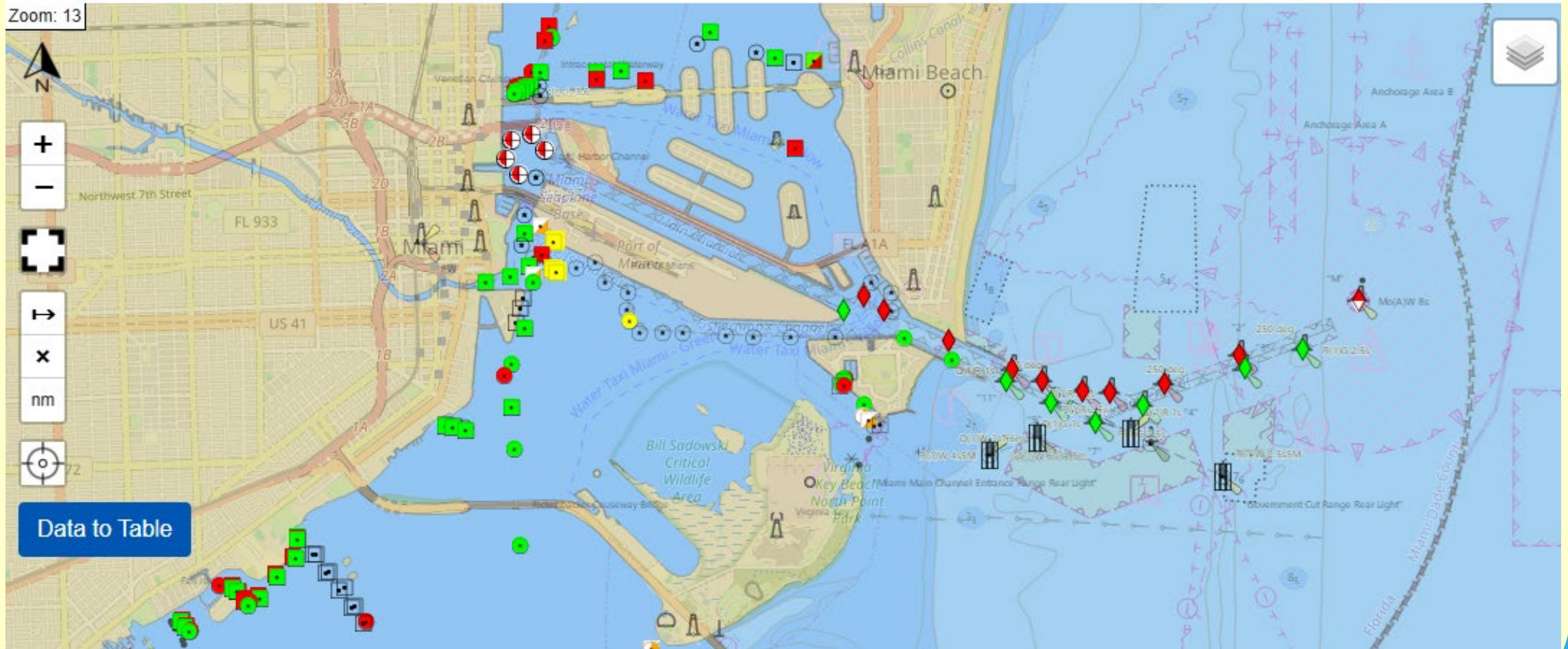
LIGHT LIST – Display

The screenshot shows a web application interface for displaying a light list. On the left, a map of Miami is shown with various navigational aids and depth contours. The map includes labels for Wynwood, Miami Beach, Miami, Crandon Park, and Key Biscayne. A zoom level of 12 is indicated. A 'Data to Table' button is visible at the bottom left of the map area.

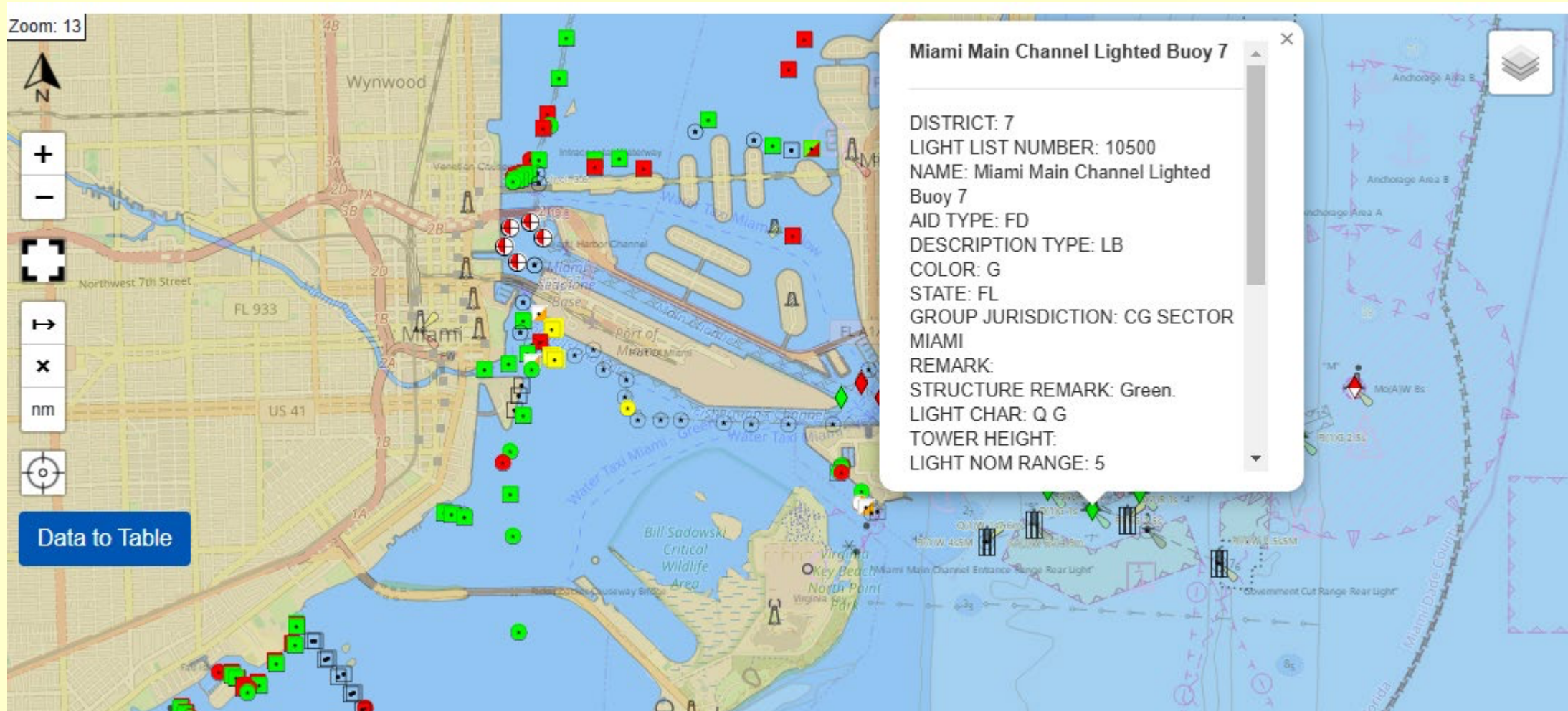
On the right, a settings panel is displayed with the following options:

- Physical Map (OSM)
- Satellite Map (USGS)
- Topographical Map (USGS)
- Electronic Navigation Charts**
 - ENCs (NOAA)
 - Inland ENCs (zoom >= 10)
- Light List**
 - Light List
- Local Notice to Mariners
 - Load all LNM layers
 - OR Load Layers Individually ---
 - Discrepant Federal Aids Load
 - Discrepant Federal Aids Corrected Load
 - Discrepant Private Aids Load
 - Discrepant Private Aids Corrected Load
 - Temporary Changes Load
 - Temporary Changes Corrected Load
 - Bridges Load

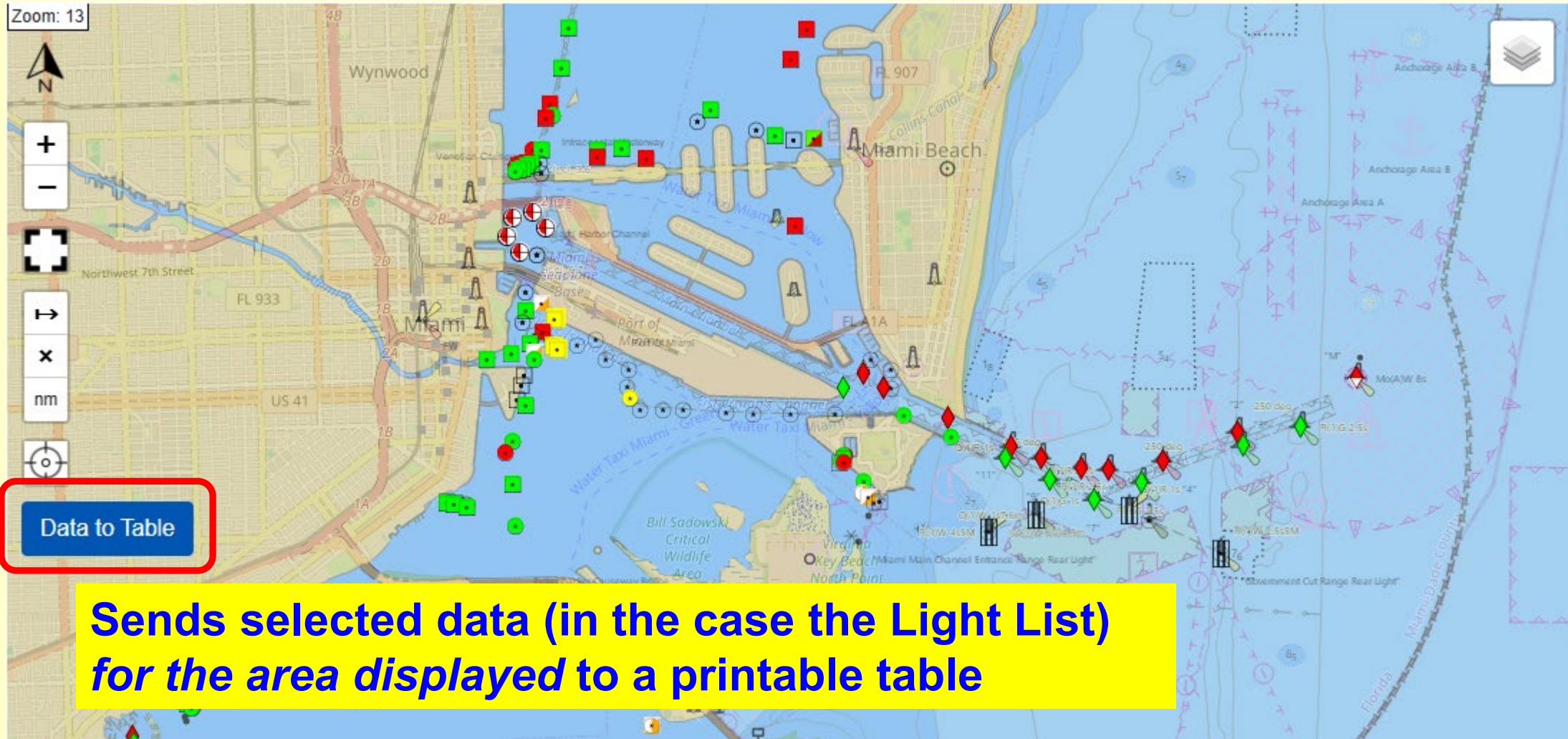
LIGHT LIST – Display



LIGHT LIST – Display



LIGHT LIST – Print



**Sends selected data (in the case the Light List)
for the area displayed to a printable table**

LIGHT LIST – Print

LLNR	Name and Waterway	Position	Characteristic	Height	Range	Structure	Remarks
895	Miami Lighted Buoy M	25-46-05.934N 080-04-59.951W	Mo (A) W	7		Red and white stripes with red spherical topmark.	AIS: MMSI 993672000
	Sector Miami Submerged Land Act (SLA)						
900	Key Biscayne FAD Northwest Buoy	25-42-49.864N 080-05-28.159W				Yellow can.	
	Sector Miami Submerged Land Act (SLA)						
905	Key Biscayne FAD Northeast Buoy	25-42-49.863N 080-04-11.156W				Yellow can.	
	Sector Miami Submerged Land Act (SLA)						

Print 29 pages

Destination

Pages

LNМ Display

- Physical Map (OSM)
- Satellite Map (USGS)
- Topographical Map (USGS)

Electronic Navigation Charts

- ENCѕ (NOAA)
- Inland ENCѕ (zoom >= 10)

Light List

- Light List

Local Notice to Mariners

- Discrepant Federal Aids
- Discrepant Federal Aids Corrected
- Discrepant Private Aids
- Discrepant Private Aids Corrected
- Temporary Changes
- Temporary Changes Corrected
- Bridges
- Changes
- Advance Notice of Change

Select all LNM categories
or just the ones you want.

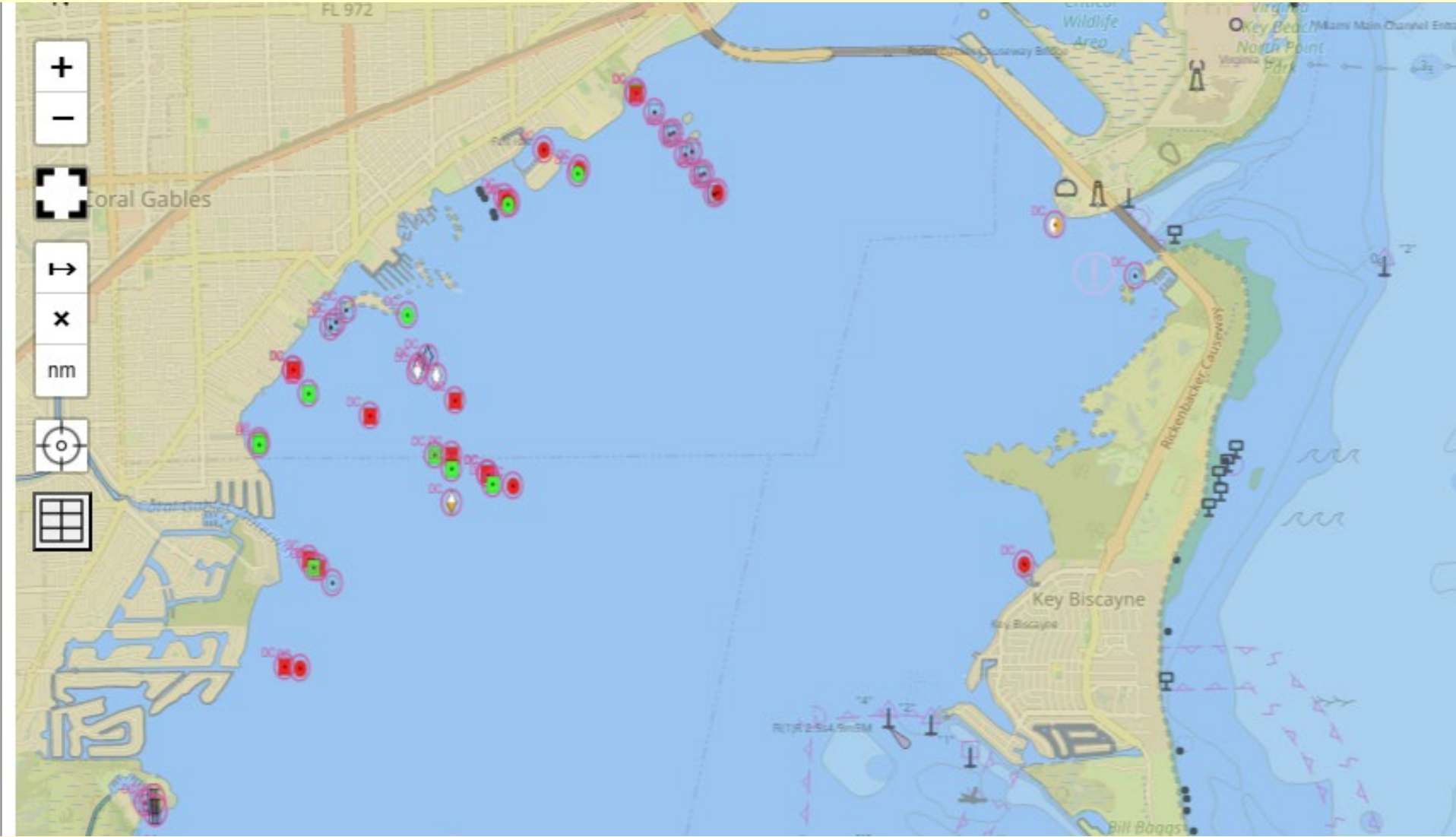
The next slide shows
discrepant Private Aids

Zoom: 12



Data to Table

LNМ Display



LNМ Display

The screenshot displays a map of Key Biscayne, Florida, with various navigational aids (LNМ) marked. A pop-up window provides detailed information for a specific aid:

Four Way Entrance Channel Light 2

- LNМ UID: 100119496195
- ATON GROUP: DISCREPANCIES - PRIVATE AIDS
- LLNR: 49090
- NAME: Four Way Entrance Channel Light 2
- DISCREP CORR STATUS: Correction Status Unreported
- DISCREP STATUS: STRUCT DEST
- DISTRICT: 7
- AID NUMBER: 200100054212
- ATON UID: 100119496195
- WTRW UID: 100116384005
- WATERWAY NAME: Unknown
- AID TYPE: PA

LNM – Print

2/3/26, 2:06 PM

Maritime Safety Information Products | Navigation Center

Discrepant Federal Aids

LLNR	Aid Name	Discrepancy Status	Aid Type
10460	Miami Main Channel Entrance Range Front Light	STRUCT DEST	FD
10680.3000000000001	Lummus Island Turning Basin Light C	STRUCT DEST/TRLB/HAZ NAV	FD
10685	Fishermans Channel Light 11	STRUCT DEST/TRLB	FD
48590	Biscayne Bay Light 69	STRUCT DEST/HAZ NAV/TRLB	FD
48915	Dinner Key Channel Light 1	LT EXT	FD

Discrepant Private Aids

LLNR	Aid Name	Discrepancy Status	Aid Type
900	Key Biscayne FAD Northwest Buoy	MISSING	PA
910	Key Biscayne FAD Southwest Buoy	MISSING	PA
915.1	Neptune Memorial Reef Buoy AA	STRUCT DEST	PA

Print 29 pages

Destination

Pages

BROADCAST NOTICE TO MARINERS

Broadcast Notices to Mariners are real time notices of Aid Discrepancies, hazards to navigation, and safety alerts, issued by each Coast Guard Sector.

BNM are communicated in three formats:

- 1. Broadcasts by Sector at scheduled times on VHF.**
- 2. RSS feeds which can be read by apps on a computer or mobile device.**
- 3. Email messages to subscribers.**

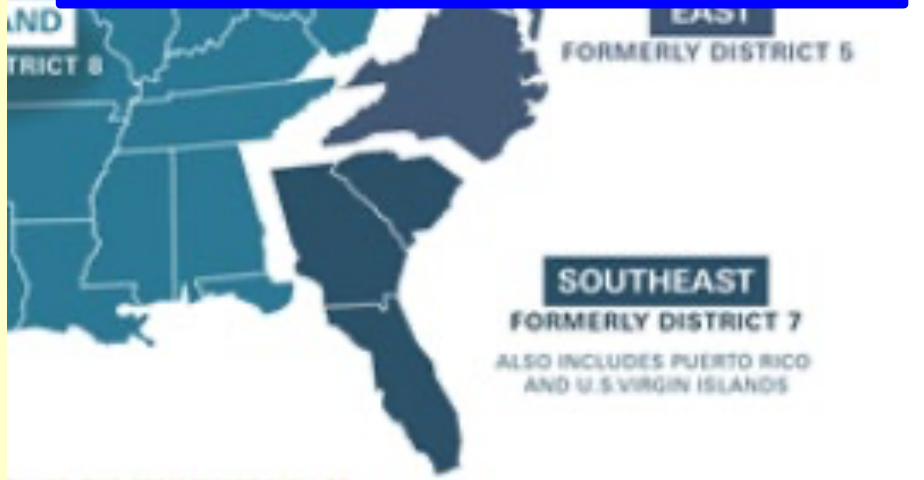
RSS & Email Updates

Anyone can register at NAVCEN to:

- Receive RSS feed of BNM
- Receive emails of BNM from Sector of choice

Subscribe to Southeast Coast Guard District RSS

- Southeast Coast Guard District (dpw)
- Sector Charleston
- Sector Jacksonville
- Sector Miami
- Sector San Juan
- Sector Key West
- Sector St. Petersburg



The map shows the Southeast Coast Guard District, formerly District 7, which includes Puerto Rico and the U.S. Virgin Islands. Other former districts shown are District 8 and District 5 (formerly District 5).

Email Updates

To sign up for updates or to access your subscriber preferences, please enter your contact information below.

Email Address *

[Privacy & Terms](#)



Enter text from image



Powered by MTCaptcha™

Submit

Cancel

BNM Email Update

2 of 21,564

SAFETY/ESTERO BAY TO LEMON BAY - MATLACHA PASS/ATON/SEC STP BNM 0025-25

Inbox x



U.S. Coast Guard

[Unsubscribe](#)

to me

12:15 PM (35 minutes ago)



United States Coast Guard
U.S. Department of Homeland Security

MATLACHA PASS DBN 79-93 (LLNR 55225, 55230, 55235, 55240, 55245, 55250, 55255, 55260, 55265) ARE RPTD MISSING DAYBOARDS. ALL MARINERS ARE ADVISED TO TRANSIT THE AREA WITH CAUTION.

CANCEL AT//042359Z FEB 25//

BT

SHARE



Questions for the Coast Guard?

[Contact Us](#)

COAST PILOT



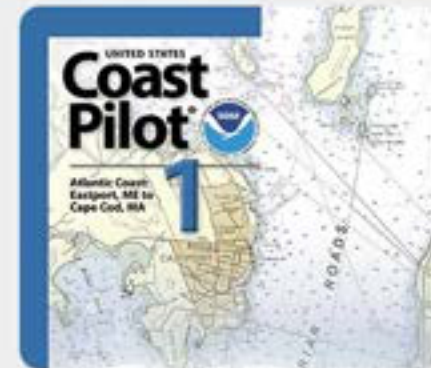
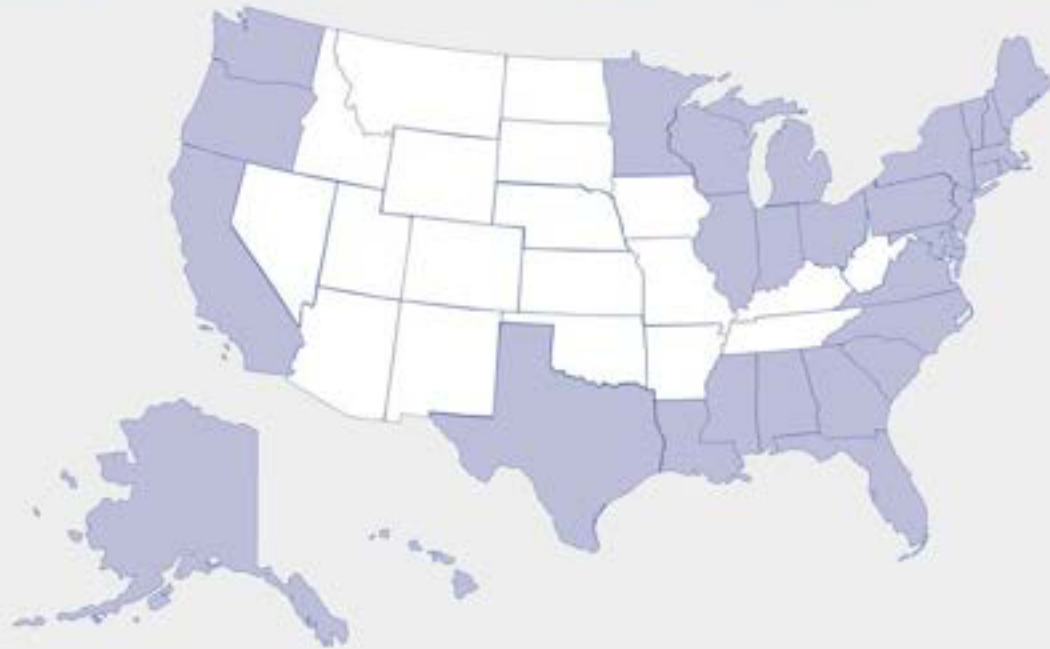
News ▾ About ▾ Charts ▾ Publications ▾ Data ▾ Learn ▾ Customer Service ▾

Search...

Home > Publications > United States Coast Pilot®

<https://nauticalcharts.noaa.gov/publications/coast-pilot/index.html>

United States Coast Pilot®



Select a region in the map to view and download Coast Pilot.

Book Edition:

Current Edition:

Next Edition:

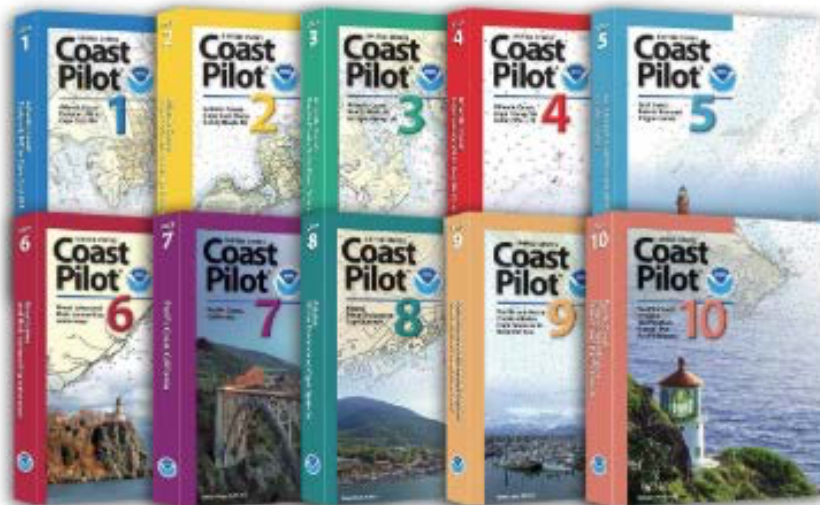
COAST PILOT

What is the U.S. Coast Pilot®?

The United States Coast Pilot® consists of a series of nautical books that cover a variety of information important to navigators of coastal and intracoastal waters and the Great Lakes. Issued in ten volumes, they contain supplemental information that is difficult to portray on a nautical chart.

U.S. Coast Pilot Topics

Topics in the Coast Pilot include channel descriptions, anchorages, bridge and cable clearances, currents, tide and water levels, prominent features, pilotage, towage, weather, ice conditions, wharf descriptions, dangers, routes, traffic separation schemes, small-craft facilities, and Federal regulations applicable to navigation.



Updated Publications Available Weekly

All Coast Pilot books are available to download free of charge.

To download the weekly updates and the latest edition, use the interactive map. Please report a [discrepancy](#) or provide additional information for updating the Coast Pilot.

Printed copies of Coast Pilot can be purchased from [NOAA Certified Coast Pilot Distributors](#), and are up to date at the time of printing.

COAST PILOT



Coast Pilot 4 covers the Atlantic coast from Cape Henry, VA to Key West, FL.

Book Edition: 57

Current Edition: 2025

Next Edition: Sept 2026

COAST PILOT



Coast Pilot 5 covers the Gulf coast from Key West, FL. to the Rio Grande, including Puerto Rico and the Virgin Islands.

Book Edition: 53

Current Edition: 2025

Next Edition: Feb 2026

COAST PILOT



Preface

Chapter 1: General Information

Chapter 2: Navigation Regulations

Chapter 3: Gulf of Mexico

Chapter 4: Key West to Tampa Bay

Chapter 5: Tampa Bay to Apalachee Bay

Chapter 6: Apalachee Bay to Mobile Bay

Chapter 7: Mobile Bay to Mississippi River

Chapter 8: Mississippi River

Chapter 9: Mississippi River to Sabine Pass

Chapter 10: Sabine Pass to San Luis Pass

Chapter 11: San Luis Pass to the Rio Grande

Chapter 12: Intracoastal Waterway

Chapter 13: Puerto Rico

Chapter 14: Virgin Islands

Navigation Rules

Appendix A

Weekly Record of Updates

COAST PILOT

General Information

- (2) The United States Coast Pilot, published by the National Oceanic and Atmospheric Administration (NOAA), is a series of ten nautical books (volumes) that encompasses a wide variety of information important to navigators of U.S. coastal/intracoastal waters and the waters of the Great Lakes. The Coast Pilot is intended to be used as a supplement to NOAA nautical charts. Much of the content cannot be shown graphically on the charts and is not readily available elsewhere. Topics which are covered include environmental factors of weather, climate, ice conditions, tides, water levels, currents, prominent coastal features and landmarks. Specific information on vertical clearances, wharf descriptions, small-craft facilities, hazards, dredged channels and depths are also provided. Navigation services and regulations are also identified including pilotage, towing, anchorages, routes and traffic separation schemes, environmental protection, and other Federal laws.

COAST PILOT

Navigation Regulations

- (1) This chapter contains extracts from **Code of Federal Regulations (CFR)** that are of importance to mariners in the area covered by this Coast Pilot. Sections of little value to the mariner are sometimes omitted. Omitted sections are signified by the following [...]
- (2) Extracts from the following titles are contained in this chapter.
- (3)

Title 15: Commerce and Foreign Trade

Part 922—National Marine Sanctuary Program Regulations

Title 33: Navigation and Navigable Waters

Part 26—Vessel Bridge-to-Bridge Radiotelephone Regulations

Part 80—COLREGS Demarcation Lines

Part 81—72 COLREGS: Implementing Rules

Part 82—72 COLREGS: Interpretive Rules

Part 88—Annex V: Pilot Rules

Part 89—Inland Navigation Rules: Implementing Rules

Part 90—Inland Rules: Interpretive Rules

Part 110—Anchorage Regulations

COAST PILOT

Cape Henry to Key West

Details of
each section
of coastline

- (1) The Atlantic Coast of the United States from Cape Henry to Cape Florida is low and sandy, backed by woods. From Cape Florida to Key West the coast is formed by a long chain of small islands known as the Florida Keys. The Florida Reefs extend seaward of the keys and are nearly parallel to them.
- (2) The coastline of Virginia from Cape Henry southward to the boundary of North Carolina is firm land for 13 miles; then it becomes a barrier beach, covered with sand dunes for 11 miles. The boundary between Virginia and North Carolina is the only marked boundary on this section of the coast. The easternmost boundary monument is a granite shaft 6 feet high about 0.5 mile west of the beach.
- (7) Ossabaw, St. Catherines, Sapelo, St. Simons, Jekyll and Cumberland.
- (8) The coastline of Florida is a long, low, barrier beach from the border of Georgia south to Cape Florida. Many of the leading tourist resorts have been built on this beach, while the business districts are often on the mainland. Under the sand and the lagoons is a limestone called **Coquina**, which is soft while in its native state but becomes a hard building stone when exposed to the air.
- (9) Below Cape Florida the Florida Keys and Florida Reefs extend for about 134 miles in a southwesterly curve to Sand Key Light and about 58 miles in a westerly

COAST PILOT



**Everything you need to know
that does not fit on a chart**

- (1) This chapter describes the 170-mile Gulf coast of Florida from Tampa Bay to Apalachee Bay, the numerous rivers emptying into this section of the Gulf and the passes making from the Gulf to the Intracoastal Waterway. Also described are the deepwater ports of Tampa, Port Tampa, Port Sutton, St. Petersburg and Port Manatee and many smaller ports.
- (2) The section of the Intracoastal Waterway from Tampa Bay to Anclote Anchorage passing through the waters described in this chapter and places along its route are discussed in chapter 12.
- (3) **COLREGS Demarcation Lines**
- (4) The lines established for this part of the coast are described in **33 CFR 80.750** through **80.805**, chapter 2.
- (5) From Tampa Bay 35 miles north to Anclote Keys, the bottom is broken, and depths of 18 feet or less are sometimes found more than 4 miles offshore. The coast is bordered by a line of long narrow barrier islands that overlap at the ends. The Gulf sides of the islands are straight or gently curving sand beaches, backed by dense growth. Between the islands and the mainland is a chain

U.S. Coast Guard Auxiliary District 7



Navigation Center

United States Coast Guard
U.S. Department of Homeland Security



Maritime Safety Information



Office of
Coast
Survey

QUESTIONS?

WE

Save Lives

US COAST GUARD AUXILIARY